



Lower ganilly

Jacksons Hill,
St.Mary's

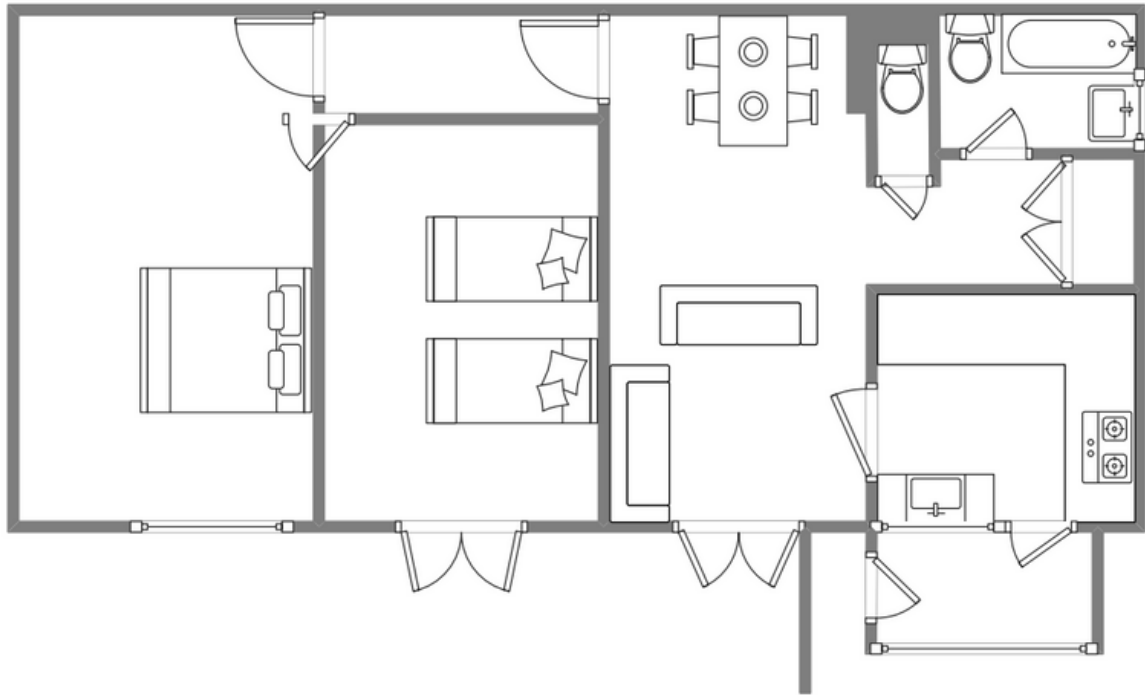


Sleeps 4 | wednesday Change over

- Double or twin arrangements
- Sea Views
- Laundry Facilities
- Private garden
- Internet access
- Children and pets welcome

Lower Ganilly is set in an elevated position and boasts stunning sea views from the bedrooms over Porthmellon Beach. The accommodation is well-presented throughout and sleeps up to four guests in one twin room and one double room. The layout includes a fully equipped kitchen, a comfortable open-plan lounge/dining room, a bathroom and separate toilet. There is also an attractive garden, which provides an extremely pleasant environment in which to sit and enjoy the sunshine. A ten-minute walk will take you to the amenities of Hugh Town and it is also convenient for Old Town with its historic church, beautiful beach and cafes.

Layout



Getting to the property

Map of St Marys



Directions from the Quay | Walking time: 12-15 minutes

Head towards the entrance to the quay
Turn left at The Mermaid Inn on to Hugh Street
Keep left all the way out of Town
Turn right by Island Carriers

Take first right into Jackson's Hill
Take immediate turn to the right
Ganilly is straight ahead
Lower Ganilly is on the ground floor

What3words:choirs.hurricane.people

Scilly Self Catering
Lower Strand
Isles of Scilly, TR21 0PS

Enquiries@scillyselfcatering.com
01720 422082
www.scillyselfcatering.com